



SAILING INSTRUCTIONS

2019 J/Fest New England
August 10th and 11th, 2019

Sail Newport
Newport, RI

INCLUDING AMENDMENT #1 8/8/19 11:44

1) RULES

- a) The regatta will be governed by the rules as defined in the Racing Rules of Sailing.
- b) The J/Fest regatta website can be found at 2019.jfestnewengland.com.
- c) Safety Equipment Requirements: All boats shall comply with the US Safety Equipment requirements published by US Sailing for the "US Nearshore" racing category and shall comply with their class rules, where applicable.
 - i) In the event of a conflict between these Requirements and applicable class rules, the class rule shall apply.
- d) The Protest Committee may impose suitable penalties, other than a disqualification, for violations of non-Part 2 rules. This changes rule 64.1.
- e) The 2019 PHRF-NB Regulations shall apply to boat sailing under PHRF. There are no weight limits except as specified below for specific classes.
- f) The current class rules shall apply to all boats racing as a one-design class, except as noted in these sailing instructions or class addendums to these sailing instructions.
- g) J/109 Class -- This is part of the East Coast Regatta Series Trophy. This is a J/109 Class "weight limited event per Class Rule 6.2" as part of the East Coast Regatta Series Championship.

Competitors are required to complete the crew name, ISAF sailor classification and weight section found in the Owners Corner of the race's yachtscoring.com site. There is a maximum combined weight of 1,213 pounds with no limit to the number of crew. Competitors are required to sail with the same number of people onboard their boat for each race in this event.

2) ENTRIES

Eligible boats shall enter by completing online registration with the Organizing Authority on the J/Fest website. Eligibility requirements for boats and method of entry are detailed in the Notice of Race.

3) NOTICES, COMPETITOR INFORMATION and SIGNALS MADE ASHORE

- a) Notices, including race results, amendments and protest hearing schedules, shall be posted on the Official Notice Board located at Sail Newport. This information may also be posted on the regatta website.
- b) Flag signals will be flown from the flagpole at Sail Newport.
- c) Any change to the sailing instructions will be posted by 0900 on the day it will take effect, except that any change to the schedule of races will be posted by 2000 on the day before it will take effect. Flag "LIMA" will be flown to signify such posting.
- d) When Pennant "AP" is displayed ashore, "One-minute" is replaced with "not less than one hour" in Race Signal "AP".
- e) Signals designating the rendezvous locations will be announced at 0900 each day on VHF channel 72. The failure for a boat to hear this announcement will not be grounds for redress. This changes rule 62.1 (a).
- f) After the rendezvous locations and any other regatta announcements have been made, Race Committee Signal Boats will monitor and communicate with the classes on VHF channel 72.

4) CLASSES AND IDENTIFICATION

- a) The Organizing Authority will divide boats into classes.
 - i) Classes will be assigned a numerical designation as seen below:
 - ii) **J/109**- Numeral Pennant 1
 - iii) **J/80**- Numeral Pennant 2
 - iv) **PHRF**- Numeral Pennant 3
- b) Format- The Race Committee will notify each circle the format intended for that day as part of the announcement in SI 3 (e). The format includes:
 - i) Drop Mark Courses
 - ii) Navigator style distance races.
 - iii) Combination of i) and ii).
- c) VHF Channels – The Race Committee will use and monitor VHF channel 72.

5) SCHEDULE OF RACES

- a) The first warning for the first class will be made at 1100 on Saturday and Sunday.
- b) Except as is provided in SI 10b, after the first race each day the Race Committee may start classes in any order.
- c) No warning for a new race will be made after 1430 Sunday.

6) RENDEZVOUS (See Appendix 1)

- a) Area "A" – Rose Island
- b) Area "B" – Jamestown
- c) Area "C" – RI Sound
- d) Area "D" – Vicinity of 200deg / 1.0 NM from Half-Way Rock

7) CHECK-IN and RETIREMENT

- a) Prior to the warning signal for the first race each day, all boats shall check in with the Race Committee Signal Boat by passing astern on starboard tack and announcing their sail number. The Race Committee will acknowledge by responding with the number heard. No check-ins will be acknowledged by VHF.
- b) A boat retiring is requested to inform the Race Committee via VHF channel 72.

8) COURSES AND MARKS

- a) The courses for drop marks for each circle are described in Appendix 2 of the sailing instructions.
- b) Courses using government marks will be identified using buoy designations as listed in the South Bay Race chart 2018-2020 edition. Copies will be provided in skipper bags and are available from the Sail Newport office. It is not intended for vessel navigation, which should be done using NOAA chart 13221.
- c) When sailing under the Newport Pell Bridge, all boats are required to sail through the center span only.

9) CHANGE OF THE NEXT LEG OF THE COURSE

- a) To change the next leg of the course, the RC will lay a new mark (or move the finishing line) and remove the original mark as soon as practicable. When in a subsequent change a new mark is replaced, it will be replaced by an original mark.
- b) In the case of a change of course, the offset shall be omitted.
- c) A leg may be changed up to 005° in bearing and/or 0.2 nm in length without a signal or change of mark color. This changes RRS 33.

10) THE START

- a) Races will be started in accordance with rule 26.
- b) The intended start for the first race each day will be as listed in SI 4a. However, the Race Committee may not start classes in numerical order based on prevailing conditions at the assigned circle or other factors. Moreover, the Race Committee may combine two or more classes into one start by displaying multiple class flags at the warning. The Race Committee will endeavor to announce the next class(es) to start on channel 72.
- c) A boat starting later than 5 minutes after her starting signal will be scored Did Not Start. This changes rule A4.
- d) The starting line will be between a staff displaying an orange flag on the Race Committee Signal Boat and the course side of the port-end starting mark.
- e) Boats whose warning signal has not been made shall keep clear of the starting area.

11) INDIVIDUAL RECALLS

The Race Committee will endeavor to hail each premature starter over the respective circle channel. Failure to make such announcement, nor the timing or order of any announcement, shall not be grounds for redress. This changes rule 62.1 (a).

12) THE FINISH

The finishing line will be between a staff displaying a BLUE flag on the Race Committee Signal Boat and the course side of the finishing mark as described in SI Appendix 2.

13) GOVERNMENT MARKS

Government buoys have no required side except when specified as marks of the course. Caution should be exercised for safe navigation.

14) PENALTY SYSTEM

- a) If class rules specify a penalty, a boat that may have broken a rule of Part 2 while racing may take a penalty at the time of the incident as provided in her class rules.
- b) For all boat where the class rule do not specify a penalty, the two-turns penalty as described in rule 44.2 is changed as follows;
 - i) A boat may take a One-Turn Penalty when she may have broken a rule of Part 2 or rule 31 while racing. However, when she may have broken a rule of Part 2 while in the zone around a mark other than a starting mark, her penalty shall be a Two-Turns Penalty.

15) POST-RACE PENALTIES

- a) After a race a boat that may have broken a rule of Part 2 or rule 31 while racing may take a Post-Race penalty for that incident. The penalty shall be a scoring penalty, calculated as stated in rule 44.3(c), however rule 44.1 (a) and (b) apply. The Post Race Penalty shall be:
 - i) 20%, if taken before the protest time limit, or,
 - ii) 30%, if taken after the protest time limit but before the beginning of a hearing involving the incident.

16) PROTESTS AND REQUESTS FOR REDRESS

- a) Boats intending to protest shall inform the Race Committee both their intention and the boat being protested as soon as possible after finishing or withdrawing from the race.
- b) Protest or requests for redress shall be submitted to the Protest Committee at Sail Newport as soon as possible, but not later than one hour after the Race Committee Signal Boat for that circle has docked. The time limit for filing a protest will be posted on the Official Notice Board.
- c) Protest notices will be posted as soon as possible on the Official Notice Board. As a convenience to racers, protest notices may also be posted on the regatta's Yacht Scoring page, in the unofficial notices section.
- d) Protest hearings will take place at Sail Newport as soon as possible after the notices are posted. The Protest Committee will attempt to hear protest in the order of receipt.
- e) Representatives of boats who are parties to a hearing shall remain on call in the vicinity of the protest rooms.
- f) When a boat has been involved in an incident that may be subject to protest, it is her responsibility to check the protest notices at the end of protest filing time to see if she is cited in a protest. Failure of any boat to appear when called for a hearing will be considered by the Protest Committee as grounds for proceeding under rule 63.3 (b).

- g) Rule 63.5 is changed by adding, "A protest involving contact may be heard by the Protest Committee even though the requirements of rule 61.1 (a) and 61.3 have not been fulfilled."
- h) On the last scheduled day of racing (Sunday), a request for redress based on a Protest Committee's decision shall be delivered in writing to the Protest Committee no later than 30 minutes after the decision was posted. This changes rule 62.2.

17) SCORING

- a) One race is required to constitute a series.
- b) A boats series score will be the total of her race scores. There will be no drop races. This changes rule A2.
- c) For scoring purposes, as needed, the distance used will be that as calculated by the Race Committee.
- d) PHRF division will be scored Time on Distance for all races.

18) PRIZES

Prizes will be awarded 1-3 in each division.

19) NOTES

- a) Competitors are reminded that Narragansett Bay is considered restricted channels for commercial traffic and other vessels restricted in their ability to maneuver. Competitors must comply with the government right-of-way rules when in proximity to commercial or privileged marine traffic.
- b) All times herein are Eastern Daylight times. Bearings are in degrees magnetic and are approximate. Distances used herein are expressed in nautical miles (when not otherwise defined) and are approximate.

Emergency Contact

- Immediately contact the PRO of your racing circle
- If necessary call 911, or hail Coast Guard on channel 16
 - Contact Matt Duggan 774-313-9578
- Contact Sail Newport Main Office 401-846-1983

Appendix 1 – Amendment 1

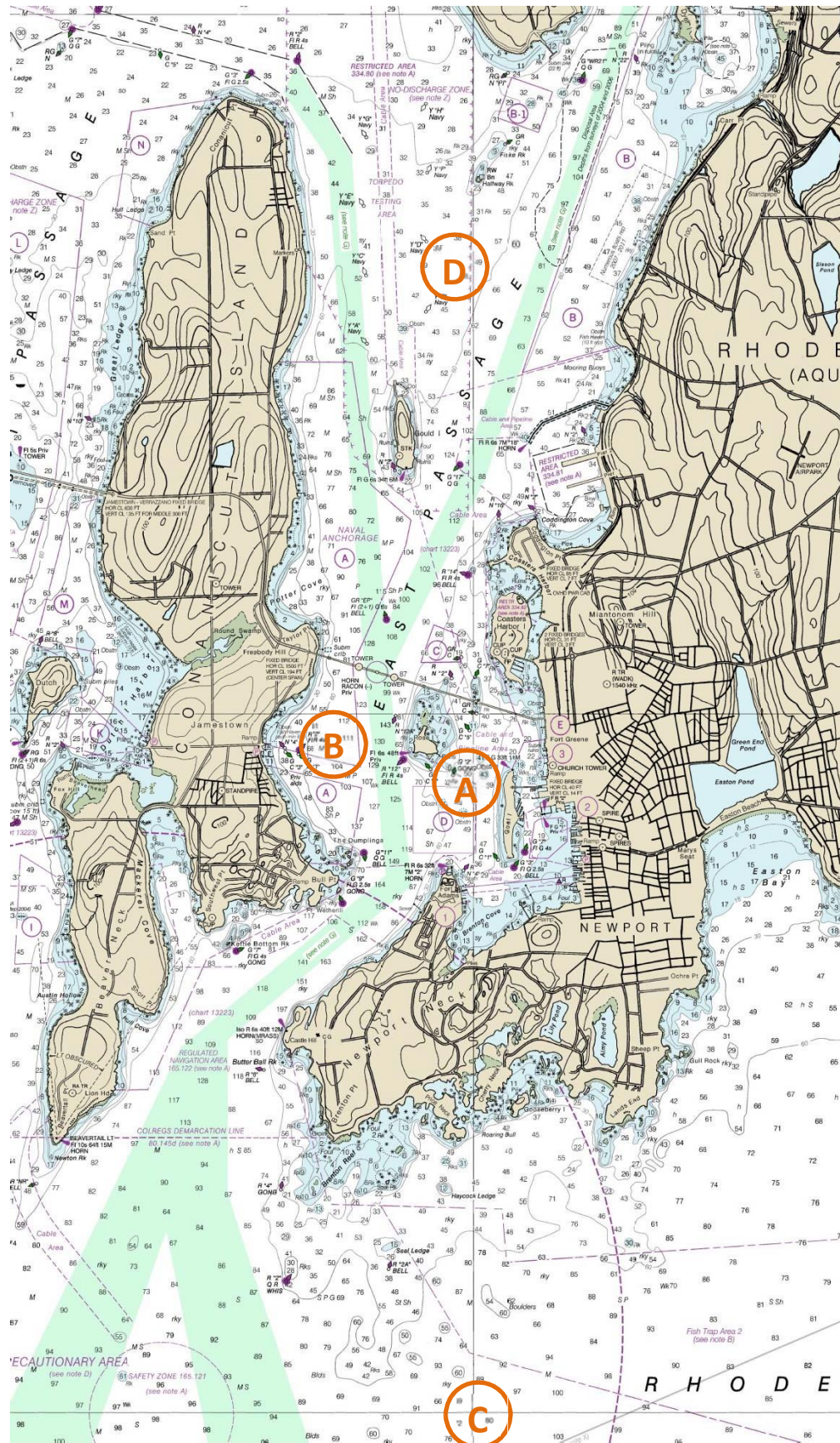


Appendix 1 - Circle, Class Assignments and Rendezvous Locations

2019 J/Fest New England
Sail Newport

Appendix 1

Rendezvous Locations



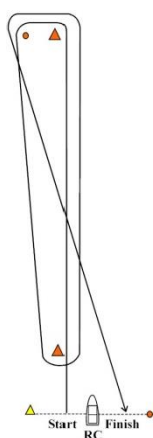
Appendix 2



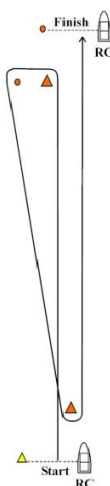
Appendix 2 - Drop Mark Courses

2019 J/Fest New England
Sail Newport
Course Diagrams

W (Even # legs)



W (Odd # legs)



Appendix 2

A COURSES

- A1. Course "W" is a Windward/Leeward course with a windward offset mark.
- A2. The leeward mark for Course "W" will be an inflatable mark(s) set approximately 0.10 NM to windward of the starting line.
- A3. A gate mark may be used for course "W".
- A4. The course designation, distance and bearing to the windward will be displayed on a white board.
- A5. Marks, including the windward offset mark, shall be rounded in order and always left to port, except that a gate, when used, shall be rounded as described in rule 28.1(c).
- A6. In the event that a gate is not in place, boats shall round the existing single mark to port. The gate may be laid after the starting signal and, except when there is a change of course, will be positioned to windward of the starting line.

B MARKS for DROP MARK COURSES

	<u>Original Marks</u>	<u>Starting</u>	<u>Finishing</u>	<u>Change Marks</u>
All Divisions	Orange	Yellow	Orange	Yellow

AROUND the ISLAND COURSES

COURSE 1 – The course will be announced on VHF 72 and on the white board on the signal boat- the course will be clockwise around Conanicut Island:

- The center span of the Newport Jamestown Bridge
 - Pass to the west of R "12" off Rose Island
 - RG "NR" Bell 650 yards SW of Beavertail Point to starboard
 - The center span of the Jamestown Verrazano Bridge
 - C "5" 1,250 yards NW of Conanicut Point to starboard
 - R "2" Fl R 4 Sec Bell 900 yards NE of Conanicut Point to starboard
- Finish in the vicinity of the starting area near Halfway Rock between a staff displaying a blue flag on a Race Committee boat and the finishing mark.

COURSE 2 – The course will be announced on VHF 72 and on the white board on the signal boat- the course will be counter clockwise around Conanicut Island:

- R "2" Fl R 4 Sec Bell 900 yards NE of Conanicut Point to port
 - C "5" 1,250 yards NW of Conanicut Point to port
 - The center span of the Jamestown Verrazano Bridge
 - RG "NR" Bell 650 yards SW of Beavertail Point to port
 - Pass to the west of R "12" off Rose Island
 - The center span of the Newport Jamestown Bridge
- Finish in the vicinity of the starting area near Halfway Rock between a staff displaying a blue flag on a Race Committee boat and the finishing mark.

C COURSE CHANGE

C1. In addition to the requirements of rule 33, the Race Committee will attempt to announce any course changes on their respective VHF channels. Failure to make such announcement shall not be grounds for

redress. This changes rule 62.1 (a).

C2. The new mark will be a different color from the original mark as described in appendix 2B.